

The Waste Blueprint 2035

Industry Support

FHKI Group 15 Demo Day
22 July 2022



環境保護署

Environmental Protection Department



Promulgation



8 Feb
2021

New Vision



**Waste
Reduction**



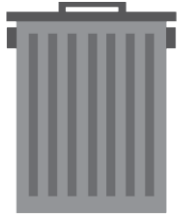
**Resources
Circulation**



**Zero
Landfill**

New Targets

Medium-term Target



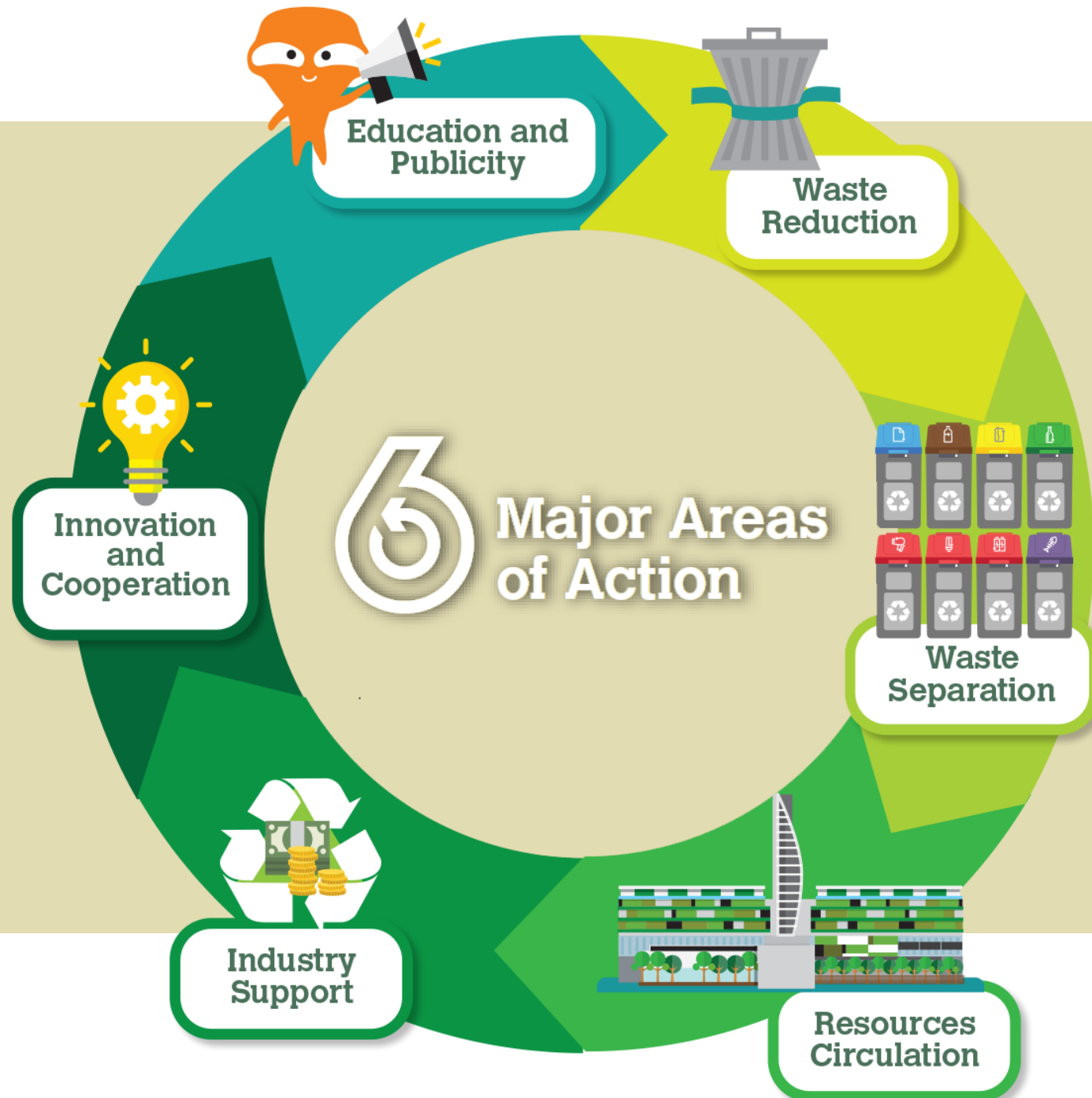
↓40-45% ↑~55%

By implementing charging for disposal of municipal solid waste (MSW) + waste reduction & recycling, to gradually reduce the per capita MSW disposal rate by 40-45% and increase the recovery rate to about 55%

Long-term Target (by around 2035)



By developing adequate waste-to-energy facilities, to move away from the reliance on landfills in the long run

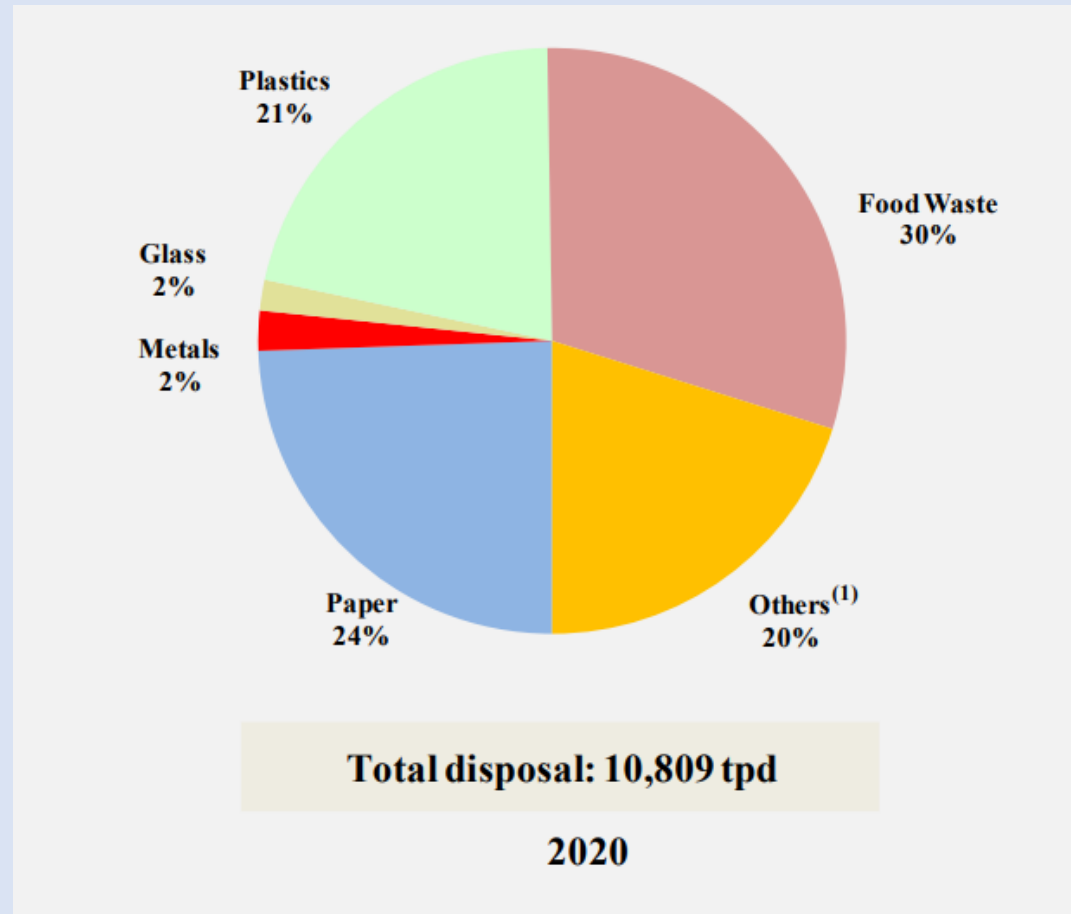


Our new vision is to achieve
Waste Reduction
Resources Circulation
Zero Landfill



Quick overview of waste plastics management

Waste plastics disposed of at landfills in 2020



Of the 10 809 tonnes MSW landfilled each day in 2020, about 21% was waste plastics (2 312 tpd)

Consultations and Engagement for Plastic Management Strategy



February to May 2021



July to September 2021



September to December 2021

Producer Responsibility Scheme on Plastic Beverage Containers

Public Consultation (February to May 2021)



- ▶ 在香港分發#的以密封塑膠容器盛載的飲料，不論該容器是屬於那種塑膠物料
Beverages carried in sealed plastic containers that are distributed in Hong Kong#, irrespective of the plastic materials of the containers
- ▶ 涵蓋容積在**100毫升至2公升**之間的飲料
The coverage is confined to beverages with volume ranging from 100mL to 2L
- ▶ 「飲料」採用玻璃飲料容器生產者責任計劃的同一定義
Adopt the same definition of “**beverage**” as in the PRS on Glass Beverage Containers



不包括 Excluding -

- (i) 本地生產而供出口的塑膠樽裝飲料；及
Plastic-bottled beverage manufactured locally and **solely for export**; and
- (ii) 進口供轉口的塑膠樽裝飲料。
Plastic-bottled beverage imported and **solely for re-export**.

Reverse Vending Machine Pilot Scheme

Stage 2 of the pilot scheme was rolled out on 25 June 2022. The number of RVMs has increased from 60 to 80, and will increase further to 120 progressively by end of August 2022.



入樽機先導計劃
RVM Pilot Scheme

咪浪費一樽一毫!
Ten-cent rebate per bottle.
Don't waste!

回收飲品
膠樽有回贈
Rebate for Returning Plastic Beverage Bottles

了解詳情
Learn More

入樽機先導計劃
每個飲品膠樽即時回贈\$0.1
Reverse Vending Machine Pilot Scheme
Instant Rebate of \$0.1 Per Plastic Beverage Bottle

環境保護署
Environmental Protection Department

熱線號碼 Hotline
9488 0277

電郵 Email
enquiry@hkrvm.com.hk

慳啲 點止 咁簡單
Learn More Register Here

Phased Scheme on Regulation of Disposable Plastic Tableware

Public Consultation (July to September 2021)



即棄塑膠餐具種類 Types of disposable plastic tableware	第一階段 Phase One	第二階段 Phase Two
發泡膠餐具 EPS tableware	禁止銷售予本地的最終消費者 (包括餐飲業處所) Prohibits the sale to local end-consumers (including catering premises)	禁止餐飲業處所向 堂食和外賣顧客提供 Prohibits the provision by catering premises to customers for dine-in and takeaway services
飲管 Straws 攪拌棒 Stirrers 進食用具(如叉、刀、匙) Cutlery (e.g. forks, knives, spoons)	禁止餐飲業處所向 堂食和外賣顧客提供 Prohibits the provision by catering premises to customers for dine-in and takeaway services	禁止餐飲業處所向 堂食和外賣顧客提供 Prohibits the provision by catering premises to customers for dine-in and takeaway services
碟 Plates 杯 Cups 杯蓋 Cup lids	禁止餐飲業處所向 堂食顧客提供 Prohibits the provision by catering premises to customers for dine-in services	Prohibits the provision by catering premises to customers for dine-in and takeaway services
食物容器 (如碗和盒) Food containers (such as bowls and boxes)		
食物容器蓋 Food container covers		
發泡膠餐具 EPS tableware		

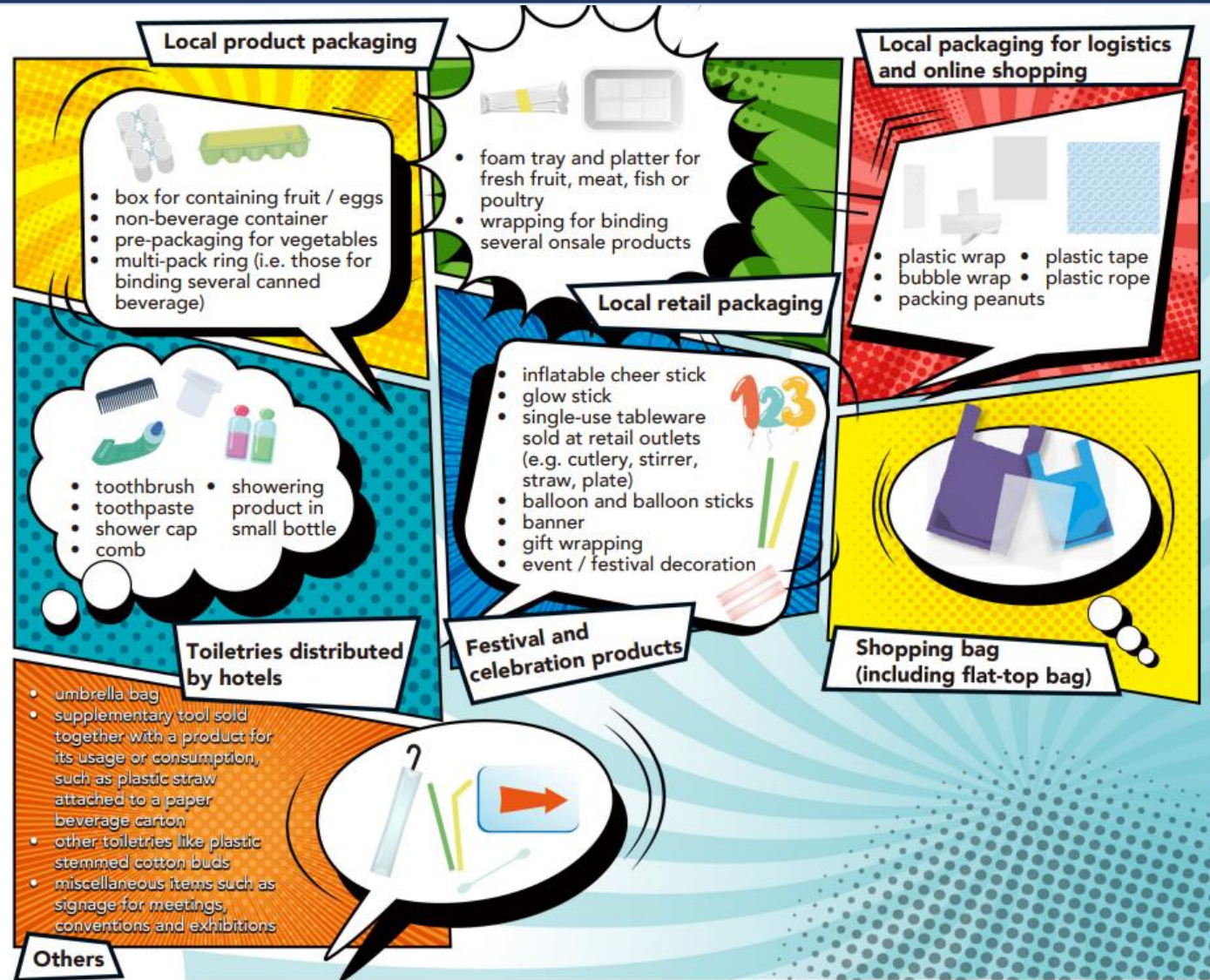
Control of Single-use Plastics

Public Consultation (September to December 2021)



Control of Single-use Plastics

Public Consultation (September to December 2021)



Control of Single-use Plastics

Key Points on Enhancement of the Plastic Shopping Bag Charging Scheme

Remove the present exemption for PSBs carrying frozen/ chilled foodstuff item and fully wrapped item



1 free PSB per sale transaction of loose foodstuff item or food & beverage takeaway foodstuff item



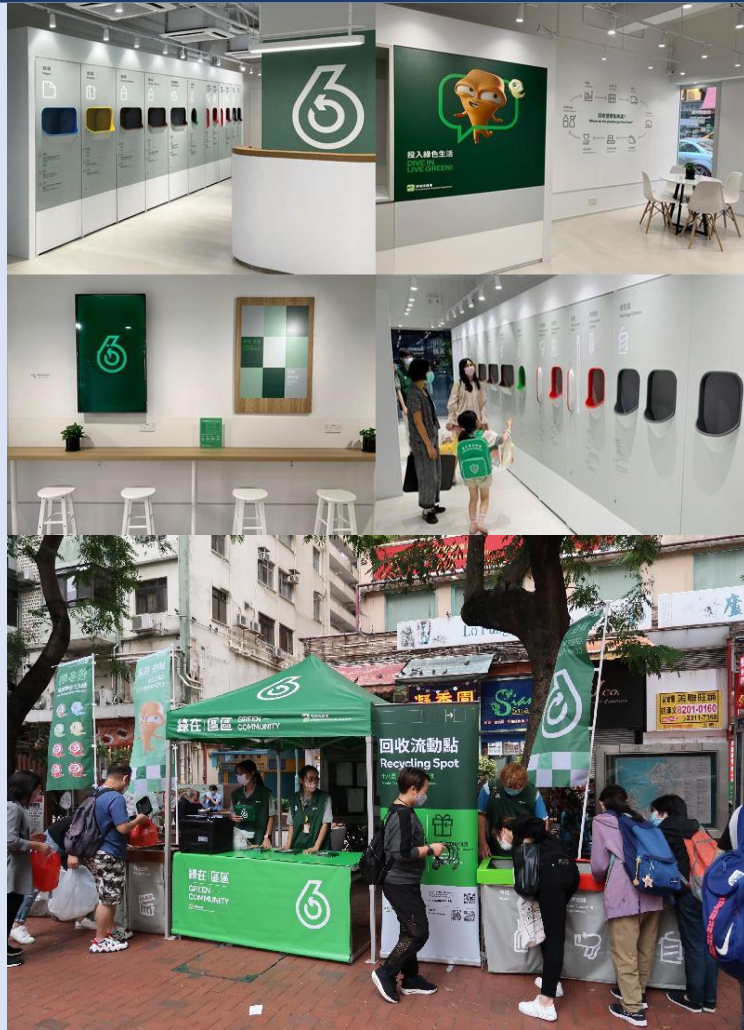
Increase charging level from 50 cents to \$1 per PSB



Supporting measures

Enhancing Plastic Recycling

Upgrading Community Recycling Facilities and Enhance Public Education and Publicity



Across the territory....

- 11 Recycling Stations across the territory
- Over 30 Recycling Stores at convenient locations
- Over 100 Recycling Spots at regular location and weekly time schedule (near single block and 3-nil residential buildings)

Enhancing Plastic Recycling

Plastic Recycling Pilot Scheme and its Extension

	Pilot Scheme	Pilot Scheme Extension
Districts	<ul style="list-style-type: none"> 3 districts (Eastern District, Kwun Tong, Sha Tin) 	<ul style="list-style-type: none"> 9 districts (Eastern District, Kwun Tong, Central & Western, Sha Tin, Tai Po, Sai Kung, Sham Shui Po, Tsuen Wan and Tuen Mun)
Service Period	<ul style="list-style-type: none"> 2020-2022 	<ul style="list-style-type: none"> 2022-2024
Types of waste plastics collected and recycled	<ul style="list-style-type: none"> <u>All</u> types of waste plastics from <u>non-C&I</u> sources 	
Target	<ul style="list-style-type: none"> Covering about 1/4 of the population of HK Actual collection amount: 2,500 tpa 	<ul style="list-style-type: none"> Covering about half of the population of HK Expected collection amount: 5,000 tpa (~14 tpd) Collected 470 tonnes in Jun 2022
Treatment processes and products produced	<ul style="list-style-type: none"> Screening & sorting, shredding & washing, and pelletization Recycled raw materials (e.g. recycled pellets) or high-end products 	



One-stop reliable recycling service "GREEN COLLECT"



Screening & Sorting

Shredding & Washing

Pelletization

Enhancing Plastic Recycling

Plastic Recycling Pilot Scheme Extension – Contract Features

1. Proper handling of waste plastics

- Comprehensive monitoring plan
- Service fee based on the weight of the recycled raw materials/products

2. Encourage the production of high-end products

- Bonus payment

3. Long-term development of the plastics recycling industry

- Contractors
- Sub-contractors
- Outlets

Way forward

Subject to the experience and effectiveness of the Pilot Scheme, we will further optimize and extend the service to cover the entire territory.



Municipal Solid Waste Charging

Enhancing Stakeholder Engagement

- Conducted more than 40 physical/online meetings and briefings
- Reached out to about 2 000 stakeholders from various trade sectors (including recycling trade)
- Working Groups with stakeholders (including recycling trade) to jointly draft Best Practice Guidelines









Recycling Fund



The Government injected an additional funding of \$1 billion to the Recycling Fund in April 2021 and extended the application period of the Recycling Fund to 2027.

As at end March 2022, the Recycling Fund has already approved about \$660 million for over 1 000 recycling enterprises, covering projects on treatment of different types of recyclables, including waste paper, waste plastics, waste metal, waste wood, food waste, etc.

Programme Summary

 Recycling Fund	Enterprise Support Programme 企業資助計劃	Enterprise Support Programme - Standard Project 企業資助計劃 - 標準項目	Industry Support Programme 行業支援計劃	
Eligible Applicant	<ul style="list-style-type: none"> Local registered enterprise with substantive business operation in HK ≥ 1-yr experience in recycling related operation Bodies and organizations with close connection to recycling industry 		<ul style="list-style-type: none"> Non-profit distributing organizations 	
Funding Limits	<ul style="list-style-type: none"> Matching fund up to 50% Max. 10 applications and cumulative funding cap of HK\$15 million 		<ul style="list-style-type: none"> Funding up to 100% Max. funding of HK\$15M per application 	
	<ul style="list-style-type: none"> Max. funding HK\$15M per application 	<ul style="list-style-type: none"> Max. funding HK\$1M per application Streamlined Programme (Fast-track application & procurement, simplified approval and disbursement procedure) 		
Project Examples	<ul style="list-style-type: none"> Subsidies Street Corner Shops to enhance recycling capacity 	<ul style="list-style-type: none"> Subsidies procurement of prescribed equipment <div style="display: flex; justify-content: space-around;">     </div>		<ul style="list-style-type: none"> HoHoSkips App 

EcoPark and Short-term Sites



Reserve Land for the Expansion of EcoPark



Identifying Sites under Short-term Tenancy

We look forward to the continuous support
from all of you in achieving the goal of

Waste Reduction
Resources Circulation
Zero Landfill

Thank you!

